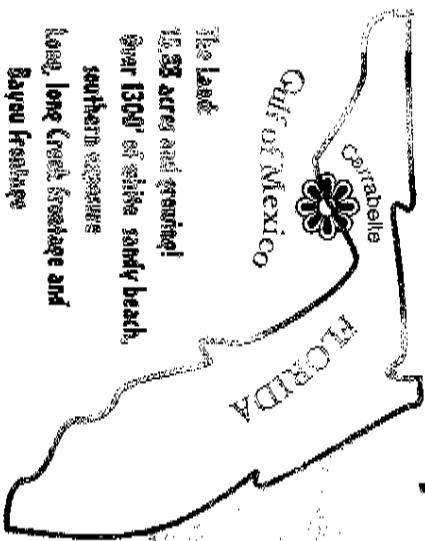


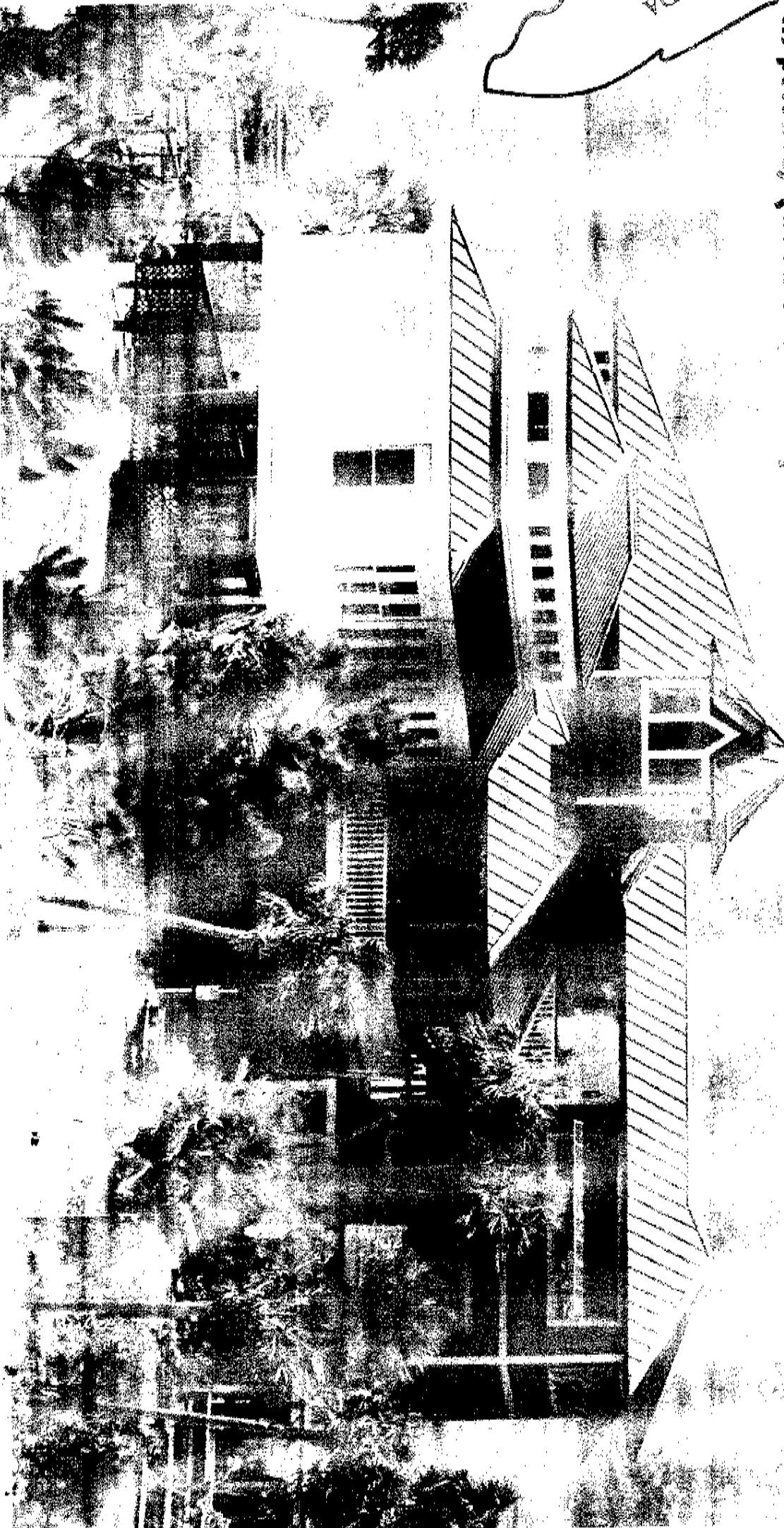
Fastlow ~~financed~~ one-of-a-kind BEACHFRONT HOME and PROPERTY

located where the beautiful northern Gulf of Mexico Coast



The Land
15.88 acres and stunning!
Over 1300' of white sandy beach,
southern exposure
long, lone Creek frontage and
Bayou frontage
Large private beach pond and
frontage on second large pond
Fantastic natural vegetation and
wildlife habitat
Gorgeous landscaping around house.

5200 sq ft house on 15.88 acres; over 1300 ft of beach plus ponds, creek and bayou in private, gated community.



View from the pond where you'll gaze at sun and moon rise over the pond, beach and bay.

